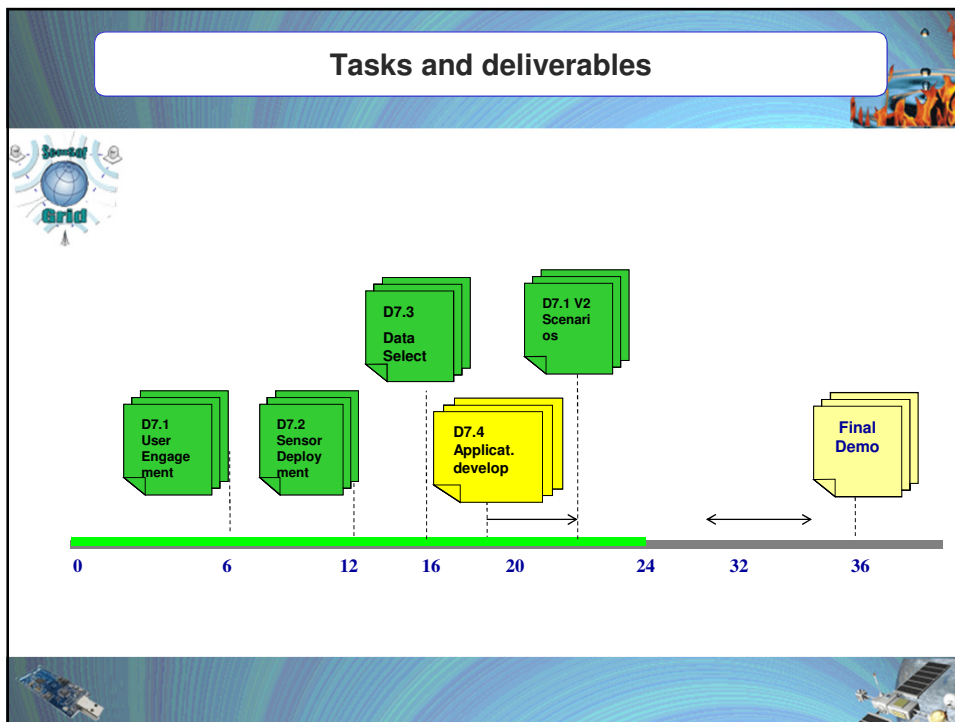
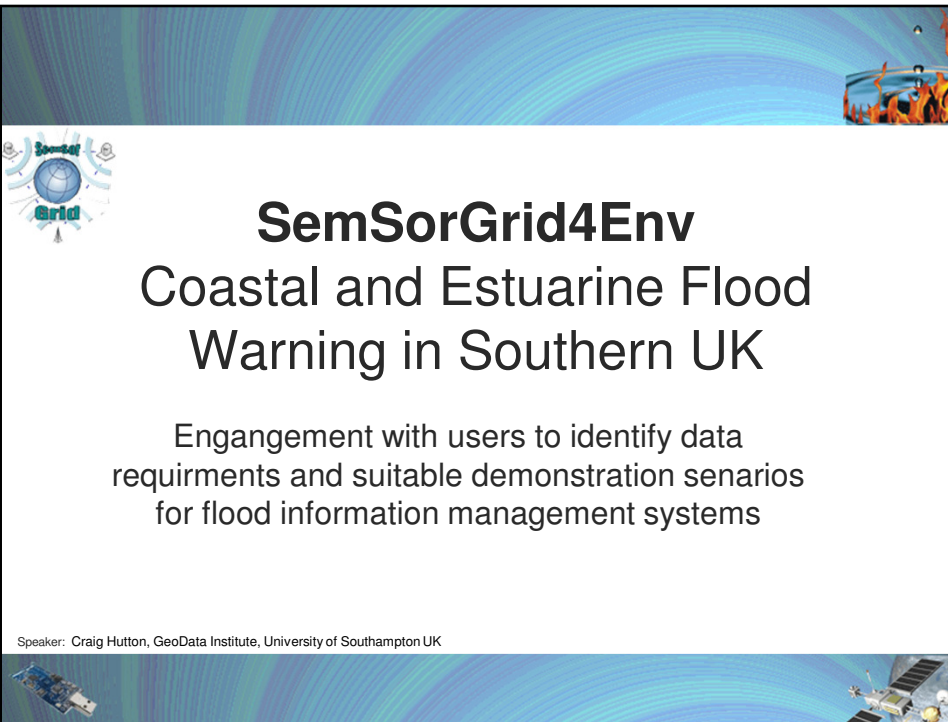


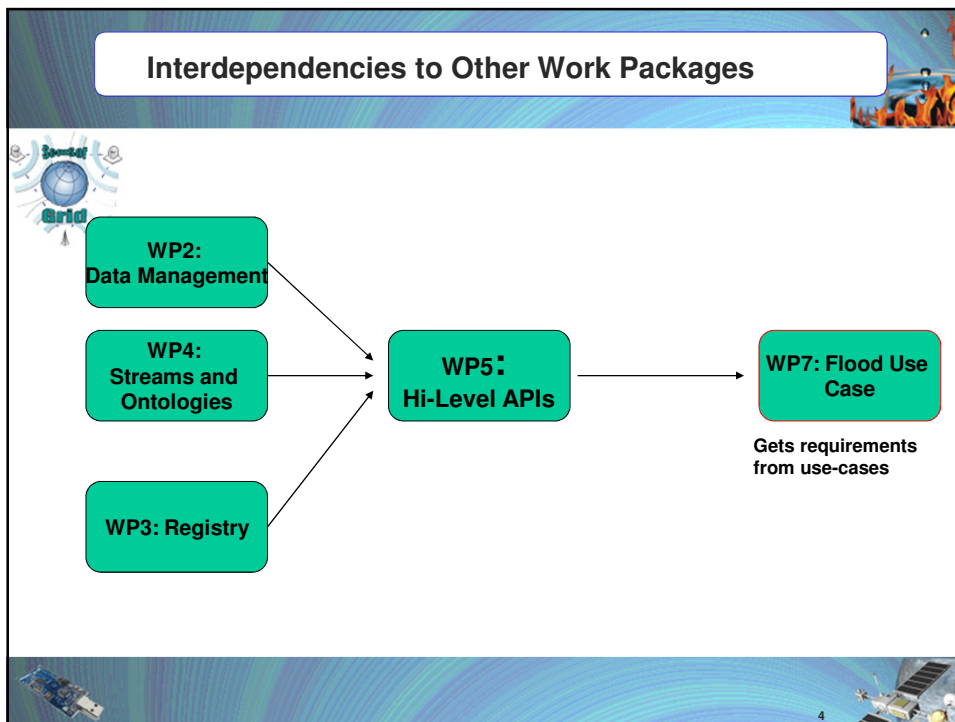
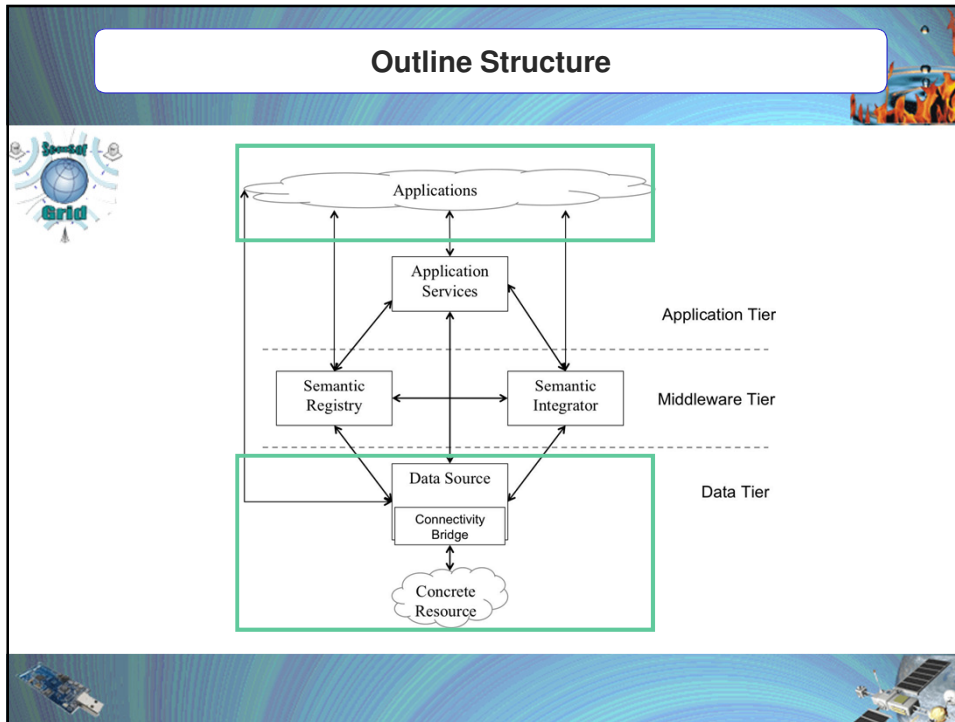
# SemSorGrid4Env

## Coastal and Estuarine Flood Warning in Southern UK

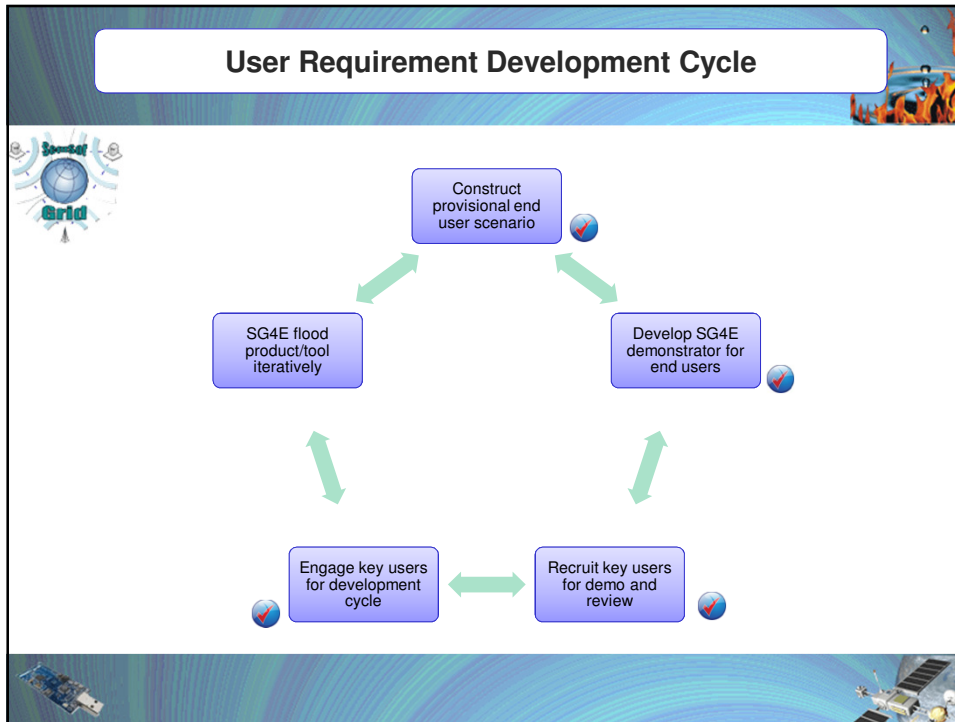
Engagement with users to identify data requirements and suitable demonstration scenarios for flood information management systems

Speaker: Craig Hutton, GeoData Institute, University of Southampton UK





**UrbanFlood Workshop Amsterdam**  
**2010 - November 11/12**



### User Requirements: May Workshop

- The Solent Forum
- The SEEDA (SEERA) Waterfront Strategy/PUSH
- The Environment Agency
- ABP
- CCO (Channel Coastal Observatory)
- The Harbour Authorities – e.g. ABP Southampton, Queen’s Harbour Master, Portsmouth
- Coastal Defence partnership Board (CDP)
- British Marine Federation
- “South Hampshire Emergency Forum”
- Emergency Services,
- Recreational providers
- Waterfront businesses (1750 of them), the public (500,000 of them)

Develop SG4E demonstrator for end users

Recruit key users for demo and review

SemSorGrid4Env (SG4E): Coastal Flood Warning Information Management System meeting, University of Southampton., MAY 2010 : A User Input to the Phase 1 Demonstrator

### ABP: Pilotage Scenario





Associated British Ports

[www.abports.co.uk](http://www.abports.co.uk)



[www.abports.co.uk](http://www.abports.co.uk)








**Shipping data (ABP)**

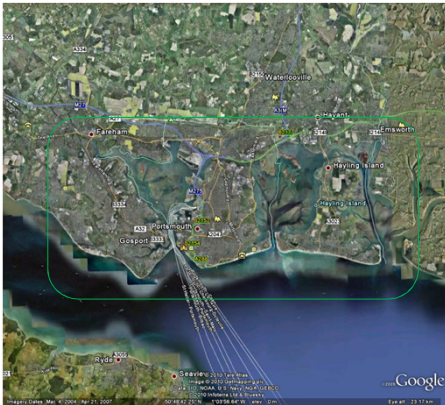
**Weather Forecast**

**Sea state**




### Coastal Defence Partnership (CDP)





**Statutory Authorities**


Fareham  
Gosport  
Havant  
Portsmouth



**Coastal Flood Forecast CCTV (CDP)**

# UrbanFlood Workshop Amsterdam 2010 - November 11/12

## Final Data Requirements



Service	Type	Features of Interest	Observed Properties	Graphic Coverage	Temporal Coverage
NFCDD	WFS	Flood defence infrastructure	Asset height, Asset condition (Asset class, Asset width, Asset inspection date, Asset Maintainer, Asset Location)	England and Wales	realtime
BRANCH	WFS	Flood defence infrastructure	(Asset class, Asset Location, Mastermap ID)	South East England (BRANCH)	realtime
Mastermap subset	WFS	Potentially Vulnerable Assets	(Asset class, Asset Location, Mastermap ID)	Solent	realtime
Weather: Nowcast	WFS	Storm (Hazard)	Wind speed Wind vector, temperature, precipitation rate, cloud cover	UK	+ / - 12 hours
Modelled metocean (given endpoints split into Modelled Tide Height and Modelled Wave Height - i.e. 2 services)	WMS	Physical Metocean	Wave height, Tide height	Solent (modelled area)	realtime to +12 hours
Modelled coastal defence fragility	WMS	Flood defence infrastructure	Asset Condition	Coastal Defence Partnership (modelled area)	realtime to +12 hours
CCO-WS and Integrator	CCO	Physical metocean	Wave height, Tide height (Wave Spread, Wave Period, Wave Direction, Sea Surface Temperature)	South East England	the past to now
Road status: HA	XML	Road congestion and access	traffic speed, road works, events	portsmouth	realtime
CCTV	AVI	Coastal defences	overtopping level at coastal defence	portsmouth defences	realtime
ABP shipping ETA	XML	ETA at pilotage area	Ship name/callsign, Position, speed, ETA, destination	solent	now +3 hours
VTS	XML	Shipping activity	position of ships	Solent	realtime

